

Gary & Myrna Lehrer's

Quarterly Illustrated Vintage Pen Catalog

garylehrer@aol.com

Issue #45 - December 2007

See the Catalog in full color on the web site. For about a week you'll need a password for access (be sure to also see what's remaining from previous Catalogs).

WEB SITE PASSWORD FOR CATALOG #45: (www.gopens.com): CLIP

Catalog #45 Features:

- A Wonderful array of US, Italian, German & French Pens
- Over 225 Items
- 20+ Manufacturers Represented
- A Group of Wonderful rare Conklins
- Montblanc, Pelikan, Parker, Sheaffer & more
- Plus the Largest & Smallest Watermans ever made!

Contact Information:

- Tel: (203) 389-5295
- email: garylehrer@aol.com
- Fax: (203) 389-4515
- Call until 10:30 PM Eastern Time; Fax anytime
- We check our email often

Subscription Expired: ● A (4) on your mailing label means your subscription has expired. "Internet Only" renewal is \$10. "Hard Copy" Renewal is \$20 US and \$30 Foreign (see website for details). Received a sample copy? Don't forget to subscribe!

Please see inside front page for abbreviations and other important information!

Gary & Myrna Lehrer 16 Mulberry Road Woodbridge, CT 06525-1717



Here's Some Other Important Information:

GIFT CERTIFICATES: Available in any denomination. No extra cost! No expiration! Always fully refundable!

REPAIRS - CONSIGNMENT - PEN PURCHASES: We do the full array of pen repairs - very competitively priced. Ask about consignment rates for the Catalog (we reserve the right to turn down consignments), or see the web site for details. We are also always looking to purchase one pen or entire collections.

ABBREVIATIONS:

Mint - No sign of use	Fine - Used, parts show wear
Near Mint - Slightest signs of use	Good - Well used, imprints may be almost gone, plating wear
Excellent - Imprints good, writes well, looks great	Fair - A parts pen
Fine+ - One of the following: some brassing, some darkening, or some wear	

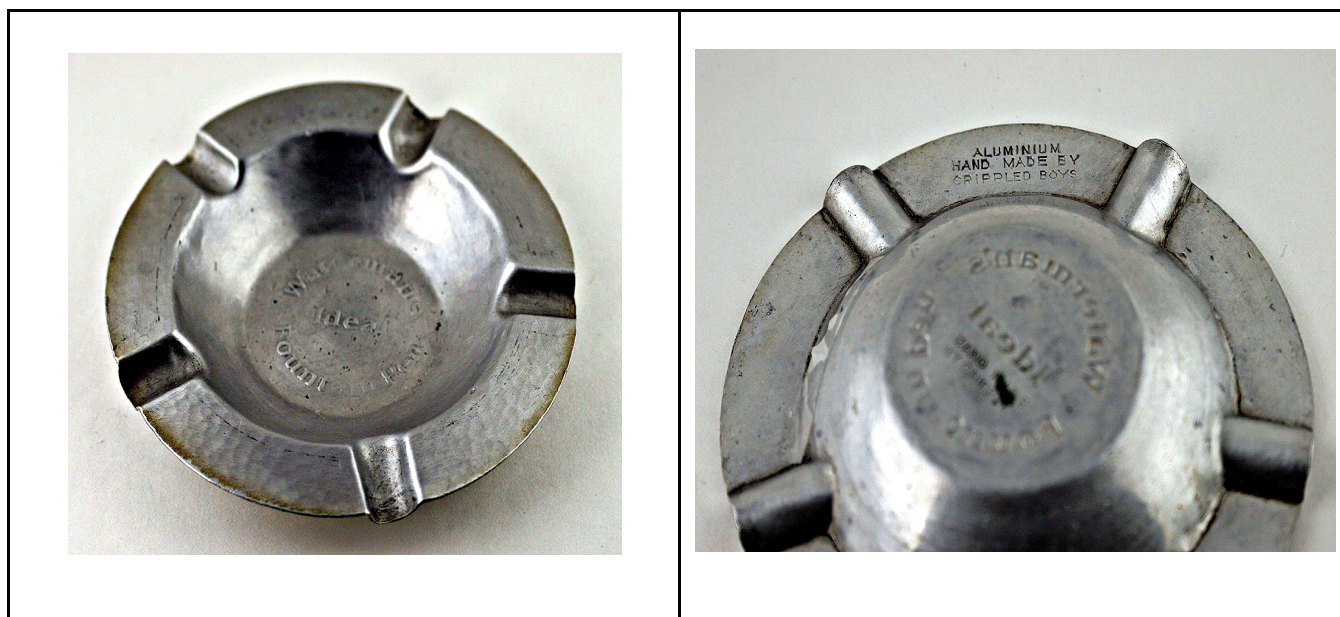
LF - Lever Filler	HR - Hard Rubber
PF - Plunger Filler (ie. Sheaffer)	BCHR - Black Chased Hard Rubber
PIF - Piston Filler (ie. Montblanc)	RBHR - Red & Black Hard Rubber
PK - Push Knob Filler (Montblanc)	CF - Cartridge Filler
GPT - Gold Plated Trim	ED - Eyedropper Filler
GFT - Gold Filled Trim	CPT - Chrome Plated Trim
BF - Button Filler	NPT - Nickel Plated Trim
CRF - Crescent Filler (Conklin)	

PRICES, POSTAGE, GUARANTEES & RETURN PRIVILEGES:

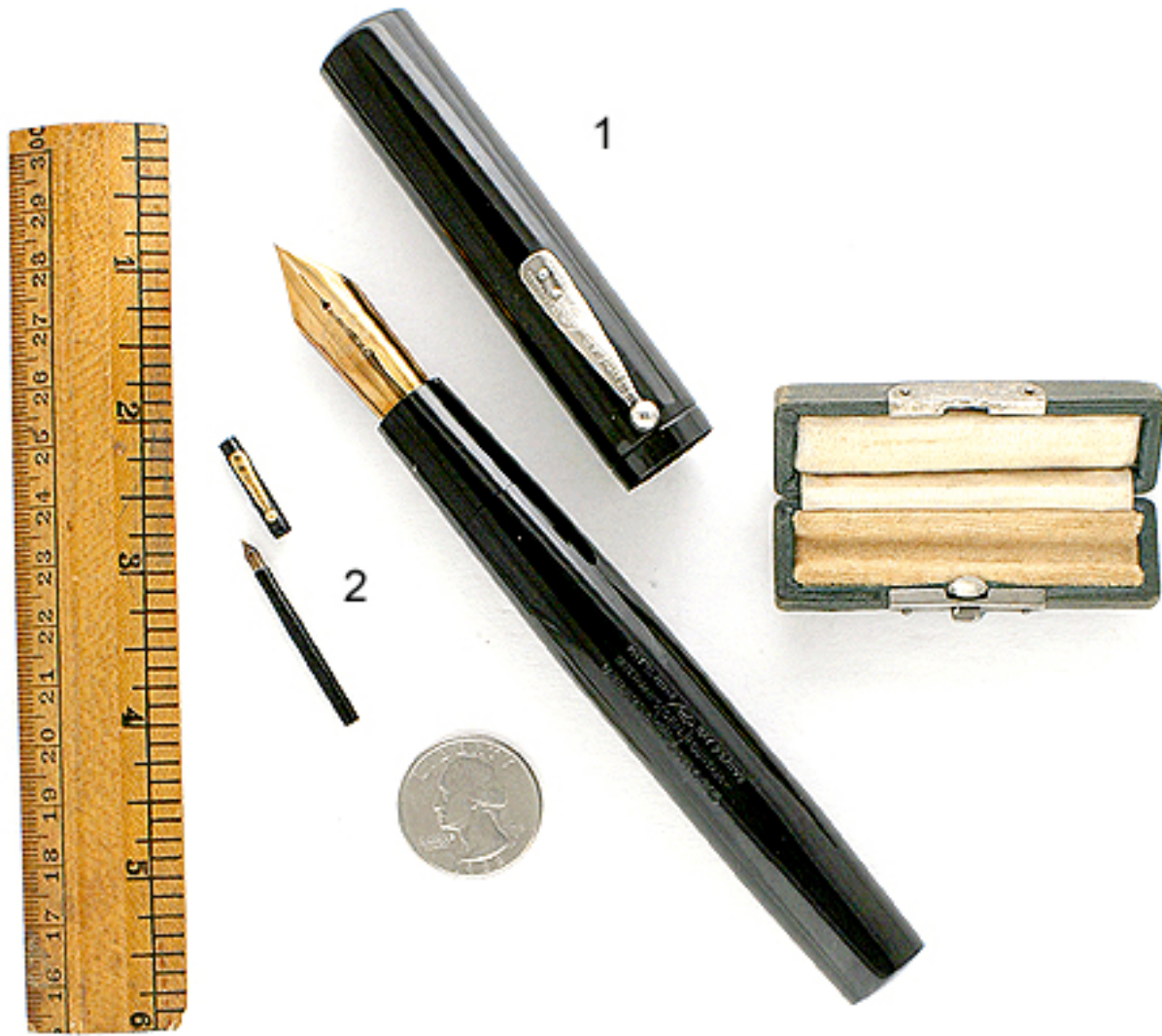
You have five (5) days from receipt of a pen to return it for any reason. All pens are restored unless specifically noted in the description. **Postage & Insurance are additional.** All pens are shipped insured. For shipments in the US we prefer UPS, and outside the US we prefer Express Mail International. We will of course use other shippers at customer request.

NIBS:

When reading item descriptions, please assume each nib is original for its pen, and is 14K gold, unless otherwise noted.



Waterman aluminum advertising ashtray. Marked on back, "Made by crippled boys."



1	Waterman	1905	20 Eyedropper-fill in smooth Black Hard Rubber. Early, slip-cap model. During the second and third decade of the 1900s, pen companies competed to offer oversized pens. Here is a wonderful example of Waterman's largest pen! Also used, in association with the "World's Smallest Pen" (see below) to attract attention in advertisements, on store window displays and in Expositions. Early nib imprint; "Waterman Ideal New York" in circular design, followed by, "10." Medium/broad nib. Perfect color with no ambering. Red wax still present in the "20" on the bottom of the pen. Near mint+	\$2250
2	Waterman	1910	"World's Smallest Pen" eyedropper-fill in Black Hard Rubber. Often called the "Doll Pen" because one rests in Queen Mary's doll house, on the King's Library Table. Just over 1.5" long and less than 1/8" in diameter, this pen was actually produced by Waterman as a way for their salesmen to spend time with potential new accounts. Their salesmen would visit a druggist, jeweler, shop owner, to try to open a new account. The buyer would inevitably say that they didn't need a new pen line and were happy with what they had. The salesman would now offer to show them the "World's Smallest Pen" as long as he was there. This allowed more time and interaction together, and often resulted in a sale! Waterman then published in their in-house newspaper, the <i>Pen Prophet</i> , that they would produce these for sale by their vendors as a special order item only. Near mint, and extremely rare, especially in the original "coffin" box!.	\$3500



3	Anonymous	1925	Unknown Italian or German #1 size Safety Pen in BHR with wonderful Italian ornate Rolled-gold (Gold-filled) overlay. Repousse double arrow shaped geometric forms, some plain and some filled with roses, on a lightning-strike shaped barley filled background. Ornate scroll work surrounds a floral crown. Quite unique. Unrestored Extra-fine nib. Near mint.	\$275
4	Byers & Hayes	1925	#8 Size LF in Deep Jade (beautiful). GFT. A NYC pen maker, founded around 1920. While this is a very large #8 size pen, it is factory fitted with a nib signed, "Warranted 14KT 6," which is actually a #4 size nib. The buyer looked like he had a top-of-the-line pen in his pocket, but actually spent considerably less than for a Parker or Sheaffer! Medium, ex-flexible nib. Nr mint	\$150
5	Chilton	1930	Pencil in Deep Jade (beautiful). Flair derby. New-old-stock. Mint.	\$85
6	Chilton	1936	Wingflow Pneumatic-fill in Black with Sterling Silver Inserts. CPT. Medium, italic nib. Near mint.	\$650
7	Chilton	1936	Wingflow Pencil in Black with Sterling Silver Inserts. CPT. Near mint	\$250
8	Conklin	1905	C3 Crescent-fill in Red & Black Mottled Hard Rubber. Extremely rare, slip cap pen, in near mint condition. Medium, flexible, italic nib.	\$700
9	Conklin	1905	S4 Crescent-fill in Red & Black Mottled Hard Rubber. Extremely rare, slip cap pen, in near mint condition. Medium, extra-flexible nib.	\$900
10	Conklin	1920	No. 4 Crescent-fill in Cardinal Hard Rubber. As rare as the Mottled Conklins above are, a Cardinal Hard Rubber example is several-fold rarer! Medium nib. A tad of brassing to the high points of the clip (very top, very bottom) otherwise near mint.	\$1500
11	Conklin	1920	2 PNL Crescent-fill in Red & Black Mottled Hard Rubber. Quite rare, screw cap pen, in near mint condition. Fine, flexible nib.	\$625
12	Conklin	1923	#2 LF All Metal Set in Gothic pattern. Fine point. Indicia nicely engraved in script, "Mother." The gripping section is also metal covered. A tad of wear to the metal at the nib edge of the gripping section, otherwise near mint++	\$125
13	Conklin	1923	Pencil for above set.	Set



14	Conklin	1927	Endura Sr. LF in Sapphire Blue. Set off beautifully with inlaid red bands. GFT. Fine point. Near mint	\$650
15	Conklin	1927	#2 LF in Ivory with Green Veins. One of the much rarer Conklin colors. Note the white bands offsetting the black ends. Fine, flexible, italic nib. Near mint	\$575
16	Conklin	1927	#2 LF in Ivory with Green Veins. Shorter than the example above, but actually rarer! One of the much rarer Conklin colors. Note the white bands offsetting the black ends. Fine, flexible, italic nib. Near mint	\$475
17	Conklin	1927	Endura Standard LF in BLUE & Bronze, one of the rarest Endura colors! GFT. Medium/fine, flexible, italic nib. Near mint*	\$450
18	Conklin	1931	Nozac Symetric 5M Word Gauge PIF DEMONSTRATOR in clear transparent. Black gripping section, turning knob and cap. Extremely rare! Broad, flexible nib. Looks like it has never seen ink. Piston mechanism working perfectly. Near mint+	\$995
19	Conklin (All American)	1935	#4 LF in Silver Pearl Web (sometimes called "Candystripe"). GFT. Broad, flexible nib, with an italic flair. Near mint	\$325
20	Conway Stewart	1937	Duro No. 30 BF in Smoke Blue Marble (beautiful). GFT. Broad, flexible Conway Stewart DURO nib (Duro nibs were used in the better Conway Stewart pens). A tad of clip ball brassing, otherwise near mint+	\$325
21	Conway Stewart	1937	Duro No. 30 BF in Blue Marble. GFT. Medium/fine, flexible Conway Stewart DURO nib (Duro nibs were used in the better Conway Stewart pens). A tad of imprint wear (fully readable), otherwise near mint+	\$300
22	C' Stewart	1939	388 LF in Blue Marble. GFT. Medium nib. Near mint	\$125
23	Conway Stewart	1951	36 LF in Black. GFT. Classically handsome, with it's three cap bands, the middle one slightly wider! Medium nib. Near mint	\$85
24	C' Stewart	1951	570 Dinkie LF in Iridescent Green Pearllex. GFT. Fine Point. New-old-stock. Mint	\$100



25	Conway Stewart	1951	12 LF in Green Pearl with Gold Veins (very unique Celluloid). GPT. Broad nib. Pen is new-old-stock, but there is some wear to the plating on the clip and the lever box. Excellent+	\$85
26	C'Stewart	1954	84 LF in Red with Gold Veins (beautiful). GPT. Medium nib. Near mint+	\$150
27	Conway Stewart	1954	84 LF in Blue with Gold Veins (beautiful). GPT. Medium nib. A tad of brassing of the lever box, otherwise near mint	\$125
28	Conway Stewart	1955	58 LF in Grey Pearl Lined Web (sometimes called "Candystripe"). GFT. Medium/fine DURO nib (Duro nibs were used in the better Conway Stewart pens). Near mint	\$200
29	Conway Stewart	1955	58 LF in Cracked Ice. GFT. Early version, with less "ice" and darker veins (for comparison, see next item). Fine point. A tad of imprint wear (fully readable), or perhaps just a weak stamping, otherwise near mint	\$450
30	C'Stewart	1956	58 LF in Cracked Ice. GFT. Extra-smooth, broad nib. New-old-stock. Mint	\$500
31	Conway Stewart	1956	Executive 62 LF in Tiger's Eye. GFT. While the pen was made in England, the rare, two wide banded Executive 62 was only sold in Australia! This helps explain its rarity... and this model is on one of their most beautiful finishes. Medium DURO nib (the Duro nib was reserved for the upper tier of Conway Stewart pens. Near mint+	\$375
32	C'Stewart	1956	76 LF Set in Green Herringbone. GFT. Fine nib with a tad of flex for cushioning. Near mint	\$250
33	C'Stewart	1956	Pencil for above set.	Set
34	De La Rue	1912	Onoto #2 Plunger-fill in Black Chased Hard Rubber. The chasing pattern is large hashmarks within a pinstriped background. Wonderful early example, with over-under feed. New-old-stock. Mint in original box with instructions.	\$125
35	Diamond Point	1925	#8 LF in Red & Black Mottled. GFT. Unusual matching gripping section (rather than the more normal black section). Medium, flexible nib (signed "Warranted 5 14K"). Near mint+	\$175



36	Eagle	1890	All Metal 6-Sided Glass Cartridge pen in black. Very early cartridge fountain pen, complete with original glass cartridge with cork. Revolutionary for it's time, but unsuccessful in the market because the feed was not yet perfected. Waterman used a very similar system 50 years later! Some wear, including to the plating of the nib, but still in great condition for what it is. Excellent	\$50
37	Edacoto	1947	4 ½ LF in Black. GFT. An ultra-streamlined pen, and an engineering marvel! Hidden behind the visualated portion of the barrel is an extra ink supply. Operating the lever first fills the visualated barrel, then fills a bladder. When the ink in visible barrel is depleted, lift the lever and the sac releases the reserve ink for use. Edacoto was known as "The Pen of France." Broad, flexible nib. New-old-stock. Mint in original box.	\$250
38 39	Eversharp	1953	Slim Ventura "Burp" Aerometric-fill Set in Gold-filled pinstriped. Manifold fine nib. Near mint++ in original box with labels and instructions.	\$100
40	Good Service	1925	#4 Size LF in Jade. NPT. Broad point. Near mint.	\$95
41	Grieshaber	1925	#4 LF in Burgundy. GFT. Very smart looking, with extra bands set near the top of the cap! Fine, flexible nib with an italic flair. The pen could be new-old-stock, but it appears that there is an extra vent hole in the cap! Near mint+	\$275
42	Ideal	1925	#4 Vest Pocket size Italian Safety Pen in BHR with Rolled-gold (Gold-filled) overlay. Alternating plain and engine-turned wave chased pinstriping. Repousse floral & vine bands at the top and bottom of both the cap and the barrel. Repousse floral clip and cap crown. Quite beautiful! Medium, extra-flexible nib. Unrestored. One pin point ding in barrel, otherwise near mint.	\$275
43	Mabie Todd	1924	Swan 44 Eternal LF in Cardinal. GFT. Medium nib. Rare color - wonderful condition! Near mint	\$400
44	Mabie Todd	1924	Swan #2 LF Pen-Pencil Combination in Ivory with Black Veins. GFT. Beautiful trim, with black bordered gold-filled bands. Cap engraved: "O.Y. Humphrey." Medium/fine, flexible nib. Gorgeous color, perhaps a tad of ambering to the barrel.	\$350
45	Mabie Todd	1926	Swan 46 Eternal LF in Cardinal. Rare color, and very hard to find in a size this large! GFT. Fine point. Near mint	\$650



46	Mabie Todd	1927	Swan SM1/58 LF in Russet & Jade (Green & Bronze Pearl Marble). Sometimes called "camouflage." NPT. Broad, flexible, italic nib. A few surface scratches on the clip, otherwise near mint	\$175
47	Mabie Todd	1932	Swan 54 Eternal LF in Ivory with Black Veins. GFT. A lovely vest pocket size pen sporting a fine nib with an italic flair. Some ambering of the cap and barrel. Excellent+	\$95
48	Mabie Todd	1937	Visofill Set in Golden Pearl. GFT. Like the Parker Vacumatic, remove the blind cap and pump the plunger to fill the pen. GFT. Wide cap bands are engraved, "From Azziz to Sam 1937." Broad nib. Some lower edge brassing and minor dings to the pen band, and a tad of brassing to the clip balls. Excellent+	\$250
49	Mabie Todd	1937	Pencil for above set.	Set
50	Mabie Todd	1938	Blackbird 5245 LF in Silver Pearl. NPT Medium, extra-flexible nib. A tad of wear to the barrel imprint (fully readable) and a few minor surface scratches. Excellent+	\$100
51	Mabie Todd	1938	Blackbird 5241 LF in Green Pearl. NPT. Medium, flexible nib. New-old-stock. Mint	\$125
52	Marchant	1950	Model 140 PIF in Bronze Pearl with Fire-engine Red Veins (beautiful). GFT. Very nice quality, French made pen. I acquired it because the color was exceptional! Extra-smooth, medium nib. Near mint	\$150
53	Monroe	1930	#4 LF in Black with Silver Pearl Rhomboid shaped Splotches (unique and beautiful). GFT. Gold-plated, fine, italic, signed "Monitor 4 Made in USA" nib. Near mint+	\$95
54	Montblanc	1924	4B Safety pen in BHR. Long pen, with cap imprinted "Mont//Blanc" and the barrel imprinted "Simplo Original Montbalnc." Unrestored. Fine, flexible nib. Looks like it never held ink. Hard rubber slightly oxidized. Excellent+	\$800
55	Montblanc	1935	322 BF in Blue Marble (extremely rare color). GFT. Medium, flexible nib with an italic flair. Could be new-old-stock. Near mint++	\$1100



56	Montblanc	1935	124 PL Push-knob filler in Platinum. GFT. Broad, flexible "Ball Point" nib (large ball of iridium). Wonderful pen! Near mint+	\$1500
57	Montblanc	1937	136 PIF in Black Celluloid. GFT. Stub, italic nib! A tiny bit of wear to the vertical lines in the long visualated barrel window, otherwise near mint	\$700
58	Montblanc	1939	139 PIF in Black Celluloid. GFT. The largest pen made by Montblanc at the time, and one of the models most sought by collectors. GF trim, except for the outer cap bands which are Sterling Silver. Long visualated barrel window, complete with original vertical pinstriping. Medium/broad nib. Near mint	\$2950
59	Montblanc	1939	138 PIF in Black Celluloid. GFT. Only produced for less than two years (1939-40) and only with a two-tone alloy nib (gold, iridium, palladium). This has an original 138 broad nib. Short, amber visualated window. Minor scratches to cap band visual with a loop, otherwise near mint.	\$1500
60	Montblanc	1941	25 Masterpiece 12-sided Push-knob filler in Green Pearl. Very rare, especially in the "High-Top" model. GFT. Extra-smooth, medium, flexible, italic nib. Near mint	\$1500
61	Montblanc	1946	246 BF in Tiger's Eye (one of Montblanc's most beautiful Celluloids). The largest size pen in this model line. GFT. Broad nib, with a tad of flex for cushioning. Near mint	\$1500
62	Montblanc	1946	246 PIF in Green with Black Veins (rare color). GFT. Medium nib, with a tad of flex for cushioning. Near mint	\$800
63	Montblanc	1950	342 PIF in Silver Pearl with Black Pinstriping (very unusual). GFT. This model was made for the Spanish market and does NOT have the white 5-pointed star in the derby (or anywhere else). Cap is factory imprinted both "Mont//Blanc" and "FABRICADO EN ESPANA POR E. WEISE." Amber visualated barrel window (under cap). New-old-stock. Mint	\$300
64	Montblanc	1950	244 PIF in Platinum, one of the most beautiful plastics used by Montblanc. GFT. Broad, flexible nib. Could be new=old-stock. Near mint++	\$1100



65	Montblanc	1955	60 4-Color Ball Pen in 12-sided Chrome (Barley Pattern). Slide one of the four levers to propel the color refill you want. Spring loaded repel. New-old-stock. Mint [also available with barrel imprint "Deutsch Kornbranntwein - Verwertungsstelle" This translates to the German Office for the Utilization of Corn Spirit. As best as I can find out, this is the German government agency responsible for control of alcohol products and reduction of consumption within the country. \$150]	\$200
66	Montblanc	1957	50 4-Color Ball Pen in 12-sided Chrome (Barley Pattern). Slide one of the four levers to propel the color refill you want. Spring loaded repel. New-old-stock. Mint	\$200
67	Montblanc	1959	56 3-Color Ball Pen in 3-sided Chrome (Barley Pattern). Slide one of the three levers to propel the color refill you want. Spring loaded repel. Near mint	\$150
68	Montblanc	1962	103 4-Color Ball Pen in Sterling Silver. 12-sided. Gravity feed (face one of the four different color dots toward the ceiling and press the cap to propel the color refill you want). Spring loaded repel. Refills readily available from Schmidt or Rotring. New-old-stock. Mint with original label.	\$300
69	Montblanc	1955	22 PIF in Black. GFT. Blue visualated window between gripping section and barrel. Slip cap. Broad, flexible, right oblique nib (shaped like left foot). Near mint [two available] [buy with matching ball pen below @ \$250]	\$150
70	Montblanc	1959	28 Ball Pen in Black. GFT. Propel/repel activating lever is located in the center of the clip. Near mint [buy with matching pen above @ \$250]	\$115
71	Montblanc	1955	206 BF in Coral Red (Montblanc pens in color are rare). GFT. Montblanc's largest pen in this model line. Medium, flexible nib. A few minor scratches to the clip, otherwise near mint	\$600
72	Montblanc	1955	82 PIF in Gold-filled. Alternating plain and pinstripe panels. Slip cap. Yellow visualated window between barrel and gripping section. Broad, right oblique nib (shaped like left foot). Could be new-old-stock. At the least near mint+	\$400
73	Montblanc	1959	144 PIF in Black CELLULOID (not the more modern "Precious Resin"). Medium, flexible nib. New-old-stock. Mint with original "EF" (extra-fine) label.	\$350



74	Montblanc	1959	31 PIF in Black. GFT. Blue visualated threads separating barrel and gripping section. Screw cap. Broad, right oblique nib (shaped like left foot). Near mint [also available with medium nib]	\$150
75	Montblanc	1959	149 PIF in Black CELLULOID (not the more modern "Precious Resin"). The largest pen made by Montblanc at the time, and one of the models most sought by collectors. GF trim, except for the outer cap bands which are Sterling Silver. Short visualated barrel window (hidden by cap), complete with original vertical pinstriping. Extra-broad nib [other nibs available]. Near mint	\$1750
76	Montblanc	1971	124 PIF in Black. Gold-filled fully heavy pinstripe cap. Medium nib. Near mint	\$200
77	Montblanc	1971	420 cartridge/converter-fill in Black. GFT. Converter included. Visualated window between barrel and gripping section. Medium nib with a tad of flex for cushioning. New-old-stock. Mint	\$90
78	Montblanc	2007	LeGrande Rollerball in Black. Platinum plated trim. List \$355. New-old-stock. Mint	\$250
79	Omas	1936	Lucens Plunger-fill ring-top in Green Marble (rare size and rare color). Highly visualated barrel. GFT. Fine, flexible, italic nib. Near mint.	\$900
80	Omas	1936	Lucens Plunger-fill Large in Black. GFT. Wide "Greek Key" middle cap band. Early version with "roller-ball" clip. Wide spiral visualated barrel. Fine, TRIPLE FLEXIBLE nib. Near mint	\$2000
81	Omas	1937	Lucens Plunger-fill Large in Black. GFT. Narrow spiral visualated barrel. Roller-ball clip. Fine, flexible nib. Near mint+	\$1100
82	Omas	1937	Extra Lucens Faceted Vest Pocket Plunger-fill in Black. Very rare size! GFT. Wide spiral visualated barrel. Fine, flexible nib. Near mint.	\$800
83	Omas	1945	Colorado double-barreled, double nibbed PIF in Black with "scissor" barrel configuration. NPT. Red dot & white dot on gripping sections so you know which side has which color ink. Incredible pen, almost never found in near mint+	\$2250
84	Omas	1954	361 PIF in Black. Gold filled cap with alternating plain and fine pinstripe panels. It is fitted with an extraordinary nib, designed to write fine, flexible on one side and fine, firm on the other! New-old-stock. Mint in original box with guarantee.	\$600



85	Parker	1910	15 Eyedropper-fill in BHR with Abalone barrel and Gold-filled Filigree Cap. Incredibly rare and beautiful! Made at a time when all pens were black and manufacturers adorned their pens to provide customers with greater choice and status symbols. Near mint+ with no dents, no brassing and the correct early nib with "Keyhole" vent hole!	\$1750
86	Parker	1919	#2 Jack Knife Safety BF ring-top in Gold-filled metal. Even the gripping section and threads are covered! One of Parker's first pens designed not to leak, hence advertised as "as safe as a Jack Knife when carried in your pocket." This model would have been on the end of a man's watch chain or in a woman's purse. Fine, flexible nib. Near mint	\$175
87	Parker	1926	Duofold Jr. BF in Red (Cardinal). GFT. Medium/broad nib. New-old-stock. Mint	\$200
88 89	Parker	1926	Duofold Jr. BF Set in Red (Cardinal). GFT. Medium/fine point. Pen near mint+. Pencil with some clip ball and crown edge brassing.	\$200
90	Parker	1926	Duofold Sr. BF in Mandarin Yellow. GFT. Early example, with YELLOW BARREL THREADS. Parker found their yellow plastics to be too fragile for threading, so manufacturing specs were changed to add 1/4" of black plastic. A tad of wear in the very center of the imprint (perhaps just a weak stamping), otherwise near mint. See matching pencil below.	\$1500
91	Parker	1927	Duofold Sr. BF in Mandarin Yellow. GFT. Canadian manufactured. Broad, flexible nib (very rare for a Parker Duofold)!! Just the slightest wear to the "Lucky Curve" on the second row of the barrel imprint, otherwise near mint+. See matching pencil below.	\$1500
92	Parker	1927	Duofold Sr. Pencil in Mandarin Yellow. Beautiful color, crisp barrel imprint and no clip brassing, but there is some brassing of the very top outer edge of the crown. One pin point ding in the crown. The companion piece to either pen above!	\$300
93	Parker	1927	Duofold Jr. BF in Lapis (Blue on Blue). GFT. Medium nib. New-old-stock. Mint	\$400
94	Parker	1928	Duofold Sr. "Big Red" BF in Cardinal.. GFT. Very respectable user grade pen. A bit of imprint wear (fully readable), knurling wear, and clip brassing. Making up for all this is a wonderfully extra-smooth medium/fine nib! Excellent	\$175



95	Parker	1928	Duofold Jr. BF in Red (Cardinal). GFT. Extra-smooth, medium nib. Could be new-old-stock. At a minimum, near mint+	\$150
96	Parker	1929	Duofold Sr. BF in Jade. GFT. This pen is absolutely mint with perfect color. You'll never find a better one! Medium nib. Bladder removed, but can be re-installed at the buyer's request.	\$900
97	Parker	1929	Duofold Jr. BF Set in Jade. Beautiful color! Pen barrel is a hardly noticeable half a shade darker than the cap and the pencil. Medium/fine nib. Near mint+	\$200
98	Parker	1929	Pencil for above set.	Set
99	Parker	1929	True Blue BF. GFT. Extra-fine nib with a tad of flex for cushioning. Barrel a little darker where hidden by cap, otherwise near mint+	\$250
100	Parker	1932	Depression Era BF in Brown Cream (beautiful). This example manufactured in Canada. GFT. Medium, italic nib. Near mint	\$275
101	Parker	1946	Vacumatic Major in Green Laminated. GFT. Two-toned, medium nib. New-old-stock. Mint with original label,	\$185
102	Parker	1947	Vacumatic Major in Green Laminated. GFT. Two-toned, medium/fine nib. Near mint	\$150
103	Parker	1937	Royal Challenger BF in Red Herringbone. GFT, with the famous "Stepped Clip." This is the smaller of the two versions in which this pen was made. Extra-smooth, fine nib. Could be new-old-stock. At a minimum, near mint+	\$275
104	Parker	1940	Duofold BF in Green Geometric ("Toothbrush") pattern. NPT. Fine point, with a tad of flex for cushioning. A few surface scratches on the trim, a tad of imprint wear (fully readable), and a very small band of darkening just at the very top of the cap. Excellent	\$125
105	Parker	1944	51 Vacumatic-fill in Cordovan Brown. Double-jeweled model. 1/10 16K GF Cap in the alternating 4 pinstriped & plain panel pattern. Medium nib. Barrel imprint a bit weak (fully readable), otherwise near mint.	\$400



106 106A	Parker	1944	51 Vacumatic-fill Set in Black. Sterling Silver fully pinstriped cap. This style cap is quite thin and the rhodium plating is very fragile. It is almost impossible to find a mint-in-the-box example, such as this one! Medium/fine nib.	\$450
107	Parker	1945	Vacumatic Major in Blue Laminated. GFT. One-tone, medium/fine nib. Near mint+	\$125
108	Parker	1945	Vacumatic Major Set in Black. GFT. One-tone, fine point. A few minor surface scratches, otherwise near mint.	\$150
109	Parker	1945	Pencil for above set.	Set
110	Parker	1945	51 Vacumatic-fill in Black. Double-jeweled model. 1/8 14K GF cap in the alternating 4 pinstripes & plain panel pattern. Fine point. Near mint	\$275
111	Parker	1945	51 Vacumatic-fill in Black. 1/10 16K GF Cap in the alternating 4 pinstripe and plain panel pattern. Very rare "Apple" jewel! Extra-fine nib. Some minor surface scratches to the cap, otherwise nr mint	\$150
112	Parker	1947	VS ("Very Special") BF Set in Brown. Brushed Lustraloy (stainless steel) caps. Aluminum filler button. Unusual model, Fine nib and an unusual CLEAR PLASTIC feed! Near mint +	\$100
113	Parker	1947	Pencil for above set.	Set
114	Parker	1947	51 Vacumatic-fill Demonstrator. This one with all parts made by Parker, with correct barrel imprint and date code. Brushed Lustraloy (Stainless Steel) cap. Medium nib. New-old-stock. Mint. Incredible condition!	\$550
115	Parker	1947	51 Demi Vacumatic-fill in Cedar Blue. The Vacumatic-fill Demi was made for only one year before it was replaced with the Aerometric-fill model and is therefore quite rare. Brushed Lustraloy (stainless steel) cap (with a few scuff marks). Medium/fine nib. Near mint+	\$95
116	Parker	1948	51 Signet Aerometric-fill in 1/10 14K Gold-filled cap & barrel. Alternating plain and pinstripe panels. Extra-smooth, medium nib. Pliglass bladder is blue, showing the pen has been used, otherwise near mint	\$295



117	Parker	1948	51 Aerometric-fill in Black. 1/10 16K Gold-filled fully pinstriped cap. Medium-fine nib. Perhaps used once or twice, as the pliglass sac is still partially clear. Near mint	\$150
118	Parker	1950	21 Special Aerometric-fill in Red. Brushed Lustraloy (stainless steel) cap, Medium/fine nib (octanium). New-old-stock. Mint with original labels (one of the labels – probably the nib size – cannot be read).	\$40
119 120	Parker	1950	41 Aerometric-fill Set in Hot Pink! Brushed Lustraloy caps. Medium nib (octanium). New-old-stock. Mint. The “Liquid Lead” should be able to be used as a non-retractable ball pen.	\$150
121	Parker	1950	21 Aerometric-fill in Green. Higher level model, with a smooth Gold-filled cap. Fine point. New-old-stock. Mint.	\$65
122	Parker	1950	51 Flighter Aerometric-fill in Polished Lustraloy (Stainless Steel). GFT. Fine point. Pliglass is clean, but pen has been dipped, otherwise mint.	\$300
123	Parker	1950	41 Aerometric-fill in Midnight Blue. White cap with gold engine-turned “Fish Scale” design. Fine point (octanium). New-old-stock. Mint	\$150
124	Parker	1950	51 Aerometric-fill Set in Black. 1/10 12K GF Cap in the 5 converging pinstripes pattern. Fine point. New-old-stock. Mint with original labels.	\$300
125	Parker	1950	Cap activated Ball Pen for above set.	Set
126	Parker	1950	51 Special Aerometric-fill set in Navy Grey. Launched in 1950, the Special was a budget priced model. The cap was polished rather than brushed, and an octanium nib was used, rather than 14K	\$75
127	Parker	1950	Pencil for above set.	Set
128	Parker	1951	51 Aerometric-fill in Forest Green (rare color). 1/10 12K GF Cap in the 5 Converging Pinstripe pattern. Medium/fine nib. Pliglass bladder is blue, showing the pen was used, otherwise near mint	\$150



129	Parker	1951	51 Aerometric-fill in Buckskin (Tan - rare color). 1/10 12K GF Cap in the 5 Converging Pinstripe pattern. Medium nib. Pliglass bladder is blue, showing the pen has been used, otherwise near mint [Also available with medium/fine nib]	\$175
130	Parker	1957	61 Presidential with 14K Solid Gold Smooth Cap & Barrel. Medium nib. Wick is blue, showing the pen has been filled. No dents or dings on the near mint+ cap & barrel. Original box. Medium nib.	\$1000
131	Parker	1957	61 Presidential with 14K Solid Gold Cap & Barrel. One of the famous pens produced in South America. Very collectible today. Alternating plain and engine-turned wave-chased panels. Med nib. Wick is blue, showing the pen has been filled. No dents/dings on the nr mint+ cap & barrel.	\$1000
132	Parker	1970	65 Coronet cartridge/converter-fill in Black. 1/5 12K GF Cap in a horizontally banded checkerboard type of pattern. Quite a hard to find model. Made in England. Medium nib. Near mint [also available with Broad "Ball" nib (large, round ball of iridium)].	\$150
133	Parker	1976	61 "Stratus" cartridge/converter-fill in Gold-filled. One of the three famous "Cloud Series" pens. Medium nib. Converter included. New-old-stock. Mint	\$275
134	Parker	1979	180 cartridge/converter-fill in Red Lacque. GFT. Converter included. The pen with the odd long triangular shaped nib which writes two ways: first, fine, then turn the nib 180 degrees, and it writes broad! New-old-stock. Mint	\$100
135	Parker	1995	Duofold International Rollerball in Fluted Sterling Silver. GPT. New-old-stock. Mint in original box, with inner box and all papers, guarantee, etc. Long sold out and hard to find!	\$350
136	Parker	2000	51 Vacumatic-fill Full Demonstrator. Rare to find both a transparent cap and barrel! Modern South American manufactured cap & barrel on vintage Parker 51 internals. Medium nib. New-old-stock.	\$250
137	Pelikan	1935	100N PIF in Tortoise. GFT. Red Cap, inner cap and turning knob. Fine, flexible, italic nib [other nibs available]. Near mint. [two available]	\$1250
138	Pelikan	1937	101N PIF in Tortoise with Matching Cap & Inner Cap and Red Turning Knob. GFT. Medium, flexible nib (other nibs available). Near mint.	\$1200



139	Pelikan	1939	101N PIF in Cobra. GFT. Quite a rare color. A few have shown up lately without the matching cap – these never came out of the factory without both a matching cap and inner cap, as this one has. Fine, flexible nib [other nibs available]. Near mint+	\$1700
140	Pelikan	1942	IBIS PIF in Grey Marble. So rare, most folks don't even realize that the IBIS was made in any color except Black! NPT. Visualated barrel (under cap). Rare broad, extra-flexible, wartime chromium-nickel, signed "IBIS CN" nib. Near mint. A must for any serious Pelikan collector.	\$1250
141	Pelikan	1948	100N PIF in Grey Pearl (rare color). GFT. TRIPLE-BROAD nib [other nibs available]. Near mint.	\$375
142	Pelikan	1950	140 PIF in Green Stripe. GFT. Fine, flexible nib. Near mint	\$100
143	Pelikan	1950	400 PIF in Green Striped. GFT. Double broad, italic, flexible nib. Near mint+ [other nibs available]	\$175
144	Pelikan	1950	400 PIF in Brown Striped. GFT. Broad, extra-flexible nib. Near mint [other nibs available]	\$200
145	Pelikan	1951	500 PIF in Brown Striped. GFT. Gold-filled cap in alternating plain and pinstripe panels. Matching Gold-filled covered turning knob. Medium/fine, flexible nib [other nibs available]. One small ding in cap, otherwise near mint	\$500
146	Pelikan	1951	400 PIF Demonstrator Set in Green Translucent. GFT. Very early example, as it does not have the internal metal cap clutch added later to stop the pen cap from cracking from the stresses of posting. Very rare and collectible! New-old-stock. Fine point. Mint in original box.	\$1000
147	Pelikan	1951	Pencil for above set.	Set
148	Pelikan	1956	500NN PIF in Brown Striped. Gold-filled cap in alternating plain and pinstripe panels. Medium, oblique nib. Near mint	\$500



149	Pelikan	1956	400NN PIF in Brown Striped. GFT. Fine nib, with a tad of flex [other nibs available]. This one has the famous "Click Cap," designed so the cap can't come loose in your pocket. Near mint.	\$200
150	Pelikan	1956	400NN PIF in Green Striped. GFT. Medium/broad, flexible nib with an italic flair [other nibs available]. Near mint	\$175
151	Pelikan	1966	30 PIF in Gold-filled pinstriped. Blue Visualated window between barrel and gripping section. Medium nib. New-old-stock. Mint	\$150
152	Pelikan	2000	M200 PIF Demonstrator in Amber Translucent. GPT. Medium nib. New-old-stock. Mint with original label. [Buy with Roller Ball below @ \$225]	\$125
153	Pelikan	2000	M200 Roller Ball Demonstrator in Amber Translucent. GPT. New-old-stock. Mint [Buy with Fountain Pen above @ \$225]	\$125
154	Pelikan	1988	M750 Sovereign Jubilee Anniversary LE in Sterling Silver Barleycorn. Visualated barrel (under cap). New-old-stock, mint with original label. [two available, the 2nd perhaps filled once. Nr mint @ \$325].	\$350
155	Reynolds	1948	Ballpen in Polished Aluminum. For collectors only – there is no way to refill with ink to make it work. A wonderful example of the very famous Reynolds ballpen!	\$75
156	RONA	1925	#2 LF in Black with 7 vertical rows of small white rhomboids (look like polka dots from a short distance). GPT. Not a significant pen, but an absolutely wonderful plastic I have never seen before! Fine point, with a tad of flex. Some plating wear to the clip, otherwise near mint.	\$75
157	Sheaffer	1922	Lifetime Flat-top Large LF in Black Lined Hard Rubber (early, very rare model). GFT. Extra-smooth, medium nib. A bit of wear here and there, but overall close to near mint	\$475
158	Sheaffer	1922	#3 LF in Gold-filled "Engraved Vine" pattern (very rare). Medium nib. Just a touch of brassing at the outer edge of the round bottom edge of the barrel, otherwise near mint.	\$900
159	Sheaffer	1933	Lifetime Balance Sr. LF in Black. Fine nib. Visualated gripping section. Near mint.	\$150



160	Sheaffer	1933	"3-25" LF in Blue & Black with White Veins. GFT. Fine nib. A tad of clip ball brassing, otherwise near mint+	\$400
161	Sheaffer	1933	"3-25" LF in Blue & Black with White Veins. GFT. Extra-fine nib. Near mint+	\$350
162	Sheaffer	1937	Lifetime Balance Large LF in Ebonized Pearl. GFT. The largest pen Sheaffer made in this plastic. Visualated section. Medium/fine nib. Near mint	\$500
163	Sheaffer	1937	Feather Touch Balance (Thin) LF in Ebonized Pearl. GFT. Full length, but for those who like a thinner pen than the model above. The "Feather Touch" line was the same quality of the guaranteed "Lifetime" line, but came without the guarantee. Fine point. Near mint	\$250
164	Sheaffer	1945	Lifetime Triumph LF Set in Black. Gold-filled pinstriped caps. Medium/fine "wrap-around" nib. Near mint++ in original box with guarantee.	\$250
165	Sheaffer	1945	Pencil for above set.	Set
166	Sheaffer	1958	Lady Skripsert IX cartridge/converter fill in Fire Engine Red, with Gold-plate overlay with inlaid red enamel. New-old-stock. Mint, with original decal on pen shell. Two cartridges included. Fine nib.	\$50
167	Sheaffer	1958	Lady Skripsert IV cartridge/converter fill in golden wave-chased engine-turned pinstriping on black. New-old-stock. Mint in original box (with instruction), with original decal on pen shell. Two cartridges included. Medium nib.	\$50
168	Sheaffer	1959	Imperial Sovereign Touchdown Set (Fountain Pen & Ball Pen) in Sterling Silver Diamond Cross Hatch. GFT. Medium/fine nib, with a tad of flex for cushioning. New-old-stock. Mint with original label.	\$275
169	Sheaffer	1959	Ball Pen for above set.	Set
170	Sheaffer	1959	Imperial Sovereign Touchdown in Sterling Silver Diamond Cross Hatch. GFT. Medium nib. Near mint	\$150



171	Sheaffer	1959	Imperial Sovereign Ball Pen - Pencil Set in Sterling Silver Diamond Cross Hatch. GFT. Near mint	\$200
172	Sheaffer	1959	Pencil for above set.	Set
173	Sheaffer	1959	Imperial Sovereign Roller Ball in Sterling Silver Diamond Cross Hatch. GFT. Near mint	\$125
174	Sheaffer	1959	PFM V Snorkel Touchdown-fill in Blue with Gold-filled cap. Fine point. A few minor surface scratches on the cap, otherwise near mint.	\$475
175	Sheaffer	1960	Compact II Cartridge-fill in Burgundy, with visualated barrel. GFT. Sheaffer's first cartridge-fill pen. The visualated barrel was eliminated in 1961 in favor of a solid barrel, making this version very rare, especially new-old-stock with original decal. Fine point. Mint in original box	\$65
176	Sheaffer	1976	Targa cartridge/converter-fill in Sterling Silver "Small Squares" pattern. CPT. Broad point. Near mint+	\$200
177	Soennecken	1933	307 PIF in Black. GFT. Clear visualated barrel (under cap). Medium/broad, italic nib. Near mint++	\$125
178	Soennecken	1954	111 Superior in Dark Tortoiseshell Herringbone. GFT. Has the famous "Click" locking piston system which can't be turned accidentally! Fine, flexible nib. Near mint	\$875
179	Tiffany	1995	Ball Pen - Pencil Set in Smooth Sterling Silver. Has the famous Tiffany "T-Clip." New-old-stock. Mint in original Tiffany pouch and box.	\$200
180	Tiffany	1995	Pencil for above set.	Set
181	Visconti	1999	Anniversary Voyager PIF in Coral Red celluloid. Sold out edition! Sterling Silver trim. 18K medium nib. Has been filled, but still near mint. List price was \$600	\$400
182	Visconti	2005	Vienna PIF with Silver Filigree Scroll work on a Black resin background (beautiful). Sterling Silver trim. Medium nib. Filled once (and flushed), otherwise new-old-stock, mint in original box. List \$450.	\$250



183	Wahl Eversharp	1920	#4 All Metal LF in Gold-filled fine pinstriped. Barrel indicia engraved, "O.Nelson." Medium/broad, extra-flexible nib. New-old-stock, mint in original box.	\$200
184	Wahl Eversharp	1927	Gold-Seal Personal Point LF in Black & Pearl. GFT. Extra-fine nib. Minor ambering of both the cap and barrel, otherwise near mint.	\$300
185	W'Eversharp	1927	Oversize Deco Band LF in Black. GFT. Medium/fine signed "Manifold" nib. Near mint	\$525
186	Wahl Eversharp	1928	#2 Signature LF in Rosewood. GFT. Fine, extra-flexible nib. Made to compete with Waterman's Ripple and Woodgrain models. Rollerball clip. Near mint.	\$250
187	Wahl Eversharp	1935	Doric Silver Seal LF in Smoke Grey (Black with Silver Pearl Veining). NPT. Wonderful #7 Adjustable nib! Near mint	\$450
188	Wahl Eversharp	1935	Doric LF in Morocco (Red Pearl with Black Veins). GFT. This is the full size Doric. Medium, flexible nib. A minor surface scratch here and there, otherwise near mint.	\$325
189	Wahl Eversharp	1942	Skyline Jr. BF in Blue Moderne Stripe. GFT. Extra-fine nib. Minor specks of brassing on the two clip edges, otherwise near mint.	\$100
190	Wahl Eversharp	1943	Skyline LF in Dark Green. Gold-filled fully Horizontally chased cap. Rarer version, with Gold-filled Crown. Fine, flexible nib. Near mint [matches pencil below]	\$85
191	Wahl Eversharp	1943	Skyline Repeater Pencil in Dark Green with gold-filled fully horizontally chased cap. Deluxe model with gold-filled push button (rather than in matching green). New-old-stock. Mint with original label.	\$50
192	Wahl Eversharp	1943	"Fifth Avenue" LF Set in Burgundy. 14K Solid Gold Caps! The Fifth Avenue has a hooded nib, and was meant to be Eversharp's answer to the very successful Parker 51. It is reasonably hard to find today. Medium nib. Near mint	\$300
193	W'Eversharp	1943	Pencil for above set.	Set



194	Wahl Eversharp	1945	All Metal Pencil in Brown. GFT. Barrel has a recessed gold-filled star with inlaid white enamel (was this made for the military?). New-old-stock. Mint	\$95
195	Waterman	1900	504 Eyedropper-fill in 14K Solid Gold. Rare "Wreath" design. Engraved, "1161 - 1061 E.F.F." No sign of wear or that the cap has ever been posted! Mint in original box.	\$2500
196	Waterman	1900	22 Taper Cap eyedropper-fill in 9K Solid Gold Fluted Pinstripe. Clear indicia. Very rare model with a finial crown! My research actually took me to a Japanese pen book where I found another example. Medium, extra-flexible nib. Near mint	\$2500
197	Waterman	1908	416 Eyedropper-fill in Sterling Silver "Filigree" Overlay on BHR. It's very hard to find examples of this pen in such a large size, especially in near mint condition! Medium, flexible, italic nib.	\$1500
198	Waterman	1910	412 SF Sleeve-filler in Sterling Silver Filigree Overlay ("SF" stands for "Self-filler" rather than "Sleeve-filler"). Early, clipless model, and sans barrel imprints. Medium, extra-flex nib. Nr mint	\$2000
199	Waterman	1915	0512 ½ P.S.F. (Pocket Self Filler) LF in Gold-filled "Oriental" Pattern (rare). The P.S.F. was Waterman's first lever-filled pen. About two years later use of the P.S.F. term was dropped. Fine, extra-flexible nib. A tad of brassing of the clip, otherwise near mint.	\$900
200	Waterman	1915	456 LF in Sterling Silver "Filigree" over BHR. Extremely hard to find in any size over 454! Six size lever-fill filigrees are almost unheard of! Fine, flexible, italic nib. Near mint	\$2500
201	Waterman	1915	452 ½ L.E.C. (Long Extended Case) LF in Sterling Silver "Pansy Panel" Overlay. Medium, extra-flexible nib with an Italic flair. Near	\$450
202	Waterman	1917	42 Continental Safety in 18 Karat Rolled-gold Overlay on BHR. Alternating plain & engine turned pinstripe panels. Fully covered barrel, including threads & turning knob (very unusual). A band of raised sapphires surrounding the cap, bordered by rows of repousse roses! A few minor dings in the smooth barrel bottom, otherwise nr mint.	\$1200
203	Waterman	1917	42 Continental Safety in 18 Karat Rolled-gold Overlay on BHR. Fully engine-turned barley pattern, with alternating panels of White, Yellow & Rose rolled-gold. Two rows of repousse roses at top of cap. Repousse crown & clip. Unrestored. Near mint	\$1500



204	Waterman	1917	42 Continental Safety in 18 Karat Rolled-gold Overlay on BHR. Alternating engine-turned wave chased, plain & pinstripe panels. Center or barrel has wide repousse band of stars on a pebble background. Wide matching band at top of cap. Repousse crown & clip. Smooth barrel end engraved in Olde English, "C.E. 4-10-1931." Unrestored. Extra-fine, extra-flexible nib. Near mint	\$1100
205	Waterman	1917	42 Continental Safety in 18 Karat Rolled-gold Overlay on BHR. A series of parallel 1/2" tall horizontal smooth "waves" encircling the barrel which is otherwise barley. Matching cap. Smooth Crown. Geometric lines on clip. Medium, flexible nib. Unrestored. Near mint	\$500
206	Waterman	1920	452 LF in Sterling Silver "Pansy Panel" Overlay. Fine, triple-flexible nib! Near mint	\$450
207 208	Waterman	1920	(05)52 1/2 LF Set in "Royal Plate" (gold-filled) Octagonal metal over BHR. Panels are alternating "Gothic" (checkerboard) and fine pinstriping. Rare and unusual model, especially with matching pencil! Medium, flexible, italic nib. Near mint	\$1100
209	Waterman	1920	(4)52 1/2 LF in Sterling Silver "Night & Day" Overlay. This is Waterman's French Night & Day design, using much longer panels than the US made version. Medium, extra-flexible nib. Light ambering inside panels, otherwise near mint.	\$1000
210	Waterman	1920	452 LF in Sterling Silver "Gothic" Overlay. Extra-smooth, medium, flexible nib. Near mint+	\$450
211	Waterman	1920	0552 LF in Gold-filled "Pansy Panel" Overlay. Fine, flexible nib! Near mint+	\$350
212	Waterman	1923	75 Eyedropper-fill HOLY WATER SPRINKLER in BHR. Any member of the Waterman "7x" family (eyedropper-fill with screw cap) is rare, and because so few Holy Water Sprinklers were manufactured, it is among the rarest! NEw0ld-stock. Mint	\$400
213	Waterman	1925	52 LF in Red Ripple. GFT. Very rare specialty nib, with upturned tines and a heavy ball of iridium, imprinted: "BALLPOINT WATERMAN'S IDEAL NEW YORK 2." Medium/broad, flexible. New-old-stock. Mint	\$275
214	Waterman	1925	0552V LF in 18 Karat Rolled-gold. Sweeping smooth geometric designs on an otherwise barley background. Smooth crown, Repousse "vine" clip. Lever-fill Continental Overlays are rare! Fine, extra-flexible nib.	\$500



215	Waterman	1926	52 1/2V LF ring-top in Red Ripple. GFT. Fine, extra-flexible nib. Near mint. Buy with pencil below to complete the set.	\$75
216	Waterman	1926	52 1/2V ring-top Pencil in Red Ripple. GFT. Near mint. Buy with pen above to complete the set.	\$20
217	Waterman	1928	94 LF in Olive Ripple. GFT. Medium/fine nib. Near mint+	\$450
218	Waterman	1928	94 LF in Olive Ripple. Extra-smooth, fine, flexible nib. A touch of brassing of the upper edge of the cap band, otherwise near mint+	\$450
219	Waterman	1928	94 Pencil in Olive Ripple. GF clip and 9K Solid Gold cap band. Can also be used as a companion to the pen above. A bit of wear to the imprint (fully readable), otherwise near mint.	\$100
220	Waterman	1930	94 LF in Blue & Cream. NPT. Medium, extra-flexible nib, with an italic flair. A few surface scratches to the trim, otherwise near mint.	\$275
221	Waterman	1936	Lady Patricia Ink View Vacuum-fill in Grey Lace. NPT. The Ink-View was Waterman's answer to the Parker Vacumatic. Instead of a plunger, there is a lever which is "pumped" several times to fill the barrel with ink. Medium, flexible, italic nib. Near mint+	\$150
222	Waterman	1936	Lady Patricia Ink View Vacuum-fill in Red Lace. NPT. See above for description of the Ink-View. Fine, flexible nib with an italic flair. Near mint	\$150
223	Waterman	1935	Ink-View Deluxe Vacuum-fill in Copper Ray.. The "Deluxe" was the top-of-the-line model. Fine, flexible nib with an italic flair. One pinpoint mark in the cap band, otherwise near mint.	\$550
224	Waterman	1936	0552 Streamlined (rare) LF in Gold-filled "Sheraton" Overlay on BHR. Indicia engraved, "Albert Del Viscovi." Pen shows some wear, so I'll call it user grade. Fortunately, it has a wonderful STUB, ITALIC, FLEXIBLE nib!	\$250
225	Waterman	1936	52V LF in Persian. GFT. Unusual die cut cap band, giving the pen a highly Art Deco look! Fine, TRIPLE FLEXIBLE nib. A tad of barrel ambering and a surface mar here and there. Excellent+	\$150
226	Waterman	1945	"Junior" #2 PISTON-FILL! Yes, Waterman did make a piston fill pen, and even with a visualated barrel! NPT. Fine nib, with a tad of flex for cushioning. New-old-stock. Mint	\$175